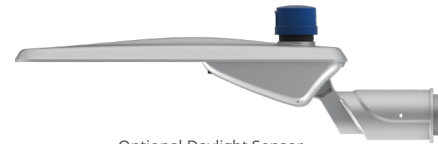


METRO CURVE SERIES



Opening for Maintenance



Optional Daylight Sensor

7 YR	66	08	70	140
WARRANTY	IP RATING	IK RATING	CRI	LM/W

- Sleek and smooth design diminishes dust accumulation
- Adjustable knuckle bracket included
- Water proof cover and anti-corrosion material
- Intelligent DALI, 0-10V Dimming controls
- Timer compatible for greater energy savings
- Smart city enabled NEMA socket options
- Tool-free replacement, quick & easy maintenance

IDEAL FOR

- Roadways
- Car Park
- Public Square
- Depot
- Industrial

STOCK
Available*

*Selected Models

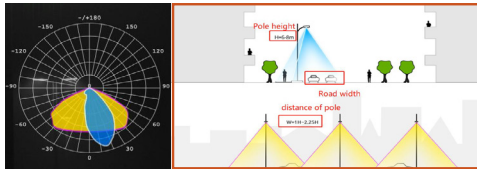


MODEL	ETG-MCSL30	ETG-MCSL50	ETG-MCSL70	ETG-MCSL90	ETG-MCSL120	ETG-MCSL150	ETG-MCSL180	ETG-MCSL240	ETG-MCSL300
Power (W)	30	50	70	90	120	150	180W	240W	300W
Lumen (lm)	4,200	7,000	9,800	12,600	16,800	21,000	25,200	33,600	42,000
Weight (kg)	5.9±0.3			7.9±0.3			10.0±0.3		
Dimension	649 × 272 × 179 mm			762 × 336 × 179 mm			887×378×196 mm		

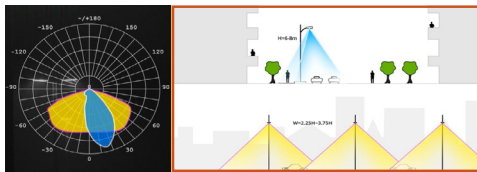
Luminous Efficacy	140lm/W	IP/IK Rating	IP66 / IK08
CCT(K)	4000K (Optional 3000K-5000K)	CRI	>70 (>80 Optional)
LED Chips	Nichia Chip (Japan)	Protection Class	Class I
Input Voltage (AC)	100-240 V AC 50/60Hz	Housing	ALU Alloy + PC Inner Lens + Tempered Glass (Outer)
Optional DC Input Voltage (DC)	24-48 V DC (Solar Compatible)	Optional Controls	DALI / Photocell / Timer Control
Surge Protection	10kV / 12kV	Optional Accessories	Photocell Controller / Nema Socket
Operating Temp	-30°C ~ 50°C	Lifespan	>70,000 (Ta=30°C@L70)
PF	>0.90 / >0.92	Warranty	7 Years

LIGHT DISTRIBUTION TYPES (OPTIONAL)

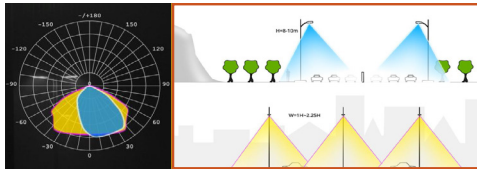
TYPE II
Short Distribution
R09602
R17603
R17604



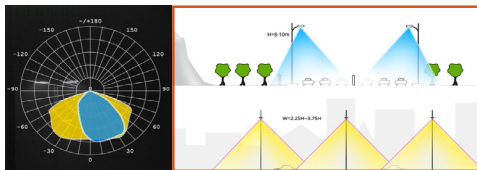
TYPE II
Medium Distribution
R01202
R09603
R17602
R09601
R17601



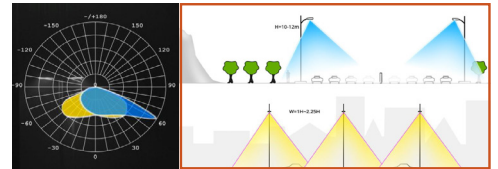
TYPE III
Short Distribution



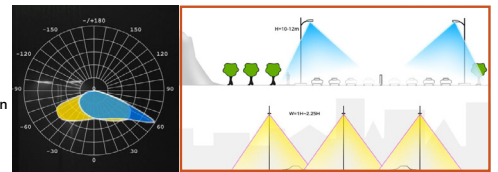
TYPE III
Medium Distribution
R17602
R01203



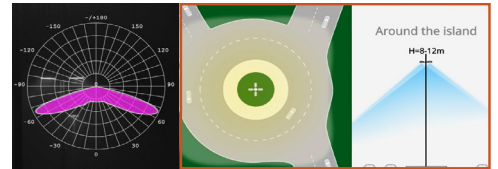
TYPE IV
Short Distribution



TYPE IV
Medium Distribution



TYPE V
Short Distribution
R01201



OPTIONAL SMART CONTROL ENABLED

Nema Socket - 7 Pin



Nema Socket - 5 Pin



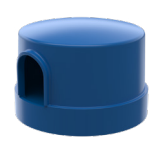
Nema Socket - 3 Pin



Short Cap For Nema Socket



Photocell Controller



MOUNTING OPTIONS (SPIGOT MOUNTING)



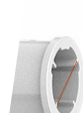
STANDARD Ø60mm



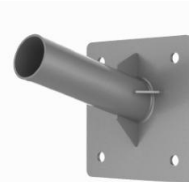
Ø76mm



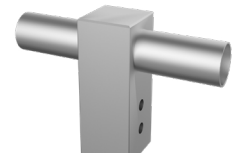
Ø42mm



Ø34mm



Wall Mounting For Dia.60mm Spigot



2 Lights For 100x100mm Square Pole



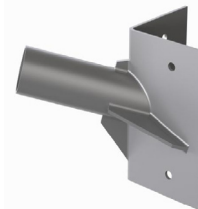
2 Lights For Ø60mm Pole



2 Lights For Ø76mm Pole



90mm Pole Single Light



Corner Mounting



90° L Shape Mounting 60mm Pole