

AURORA SERIES

7 YR WARRANTY	66 IP RATING	70 CRI	150 LM/W
----------------------------	------------------------	------------------	--------------------

- High powered street & area light
- High output lumen efficacy of 145 lm/W
- 76% less power consumption compared to HID lights
- Intelligent DALI, 1-10V Dimming control, timer control & solar compatible for greater savings
- Various optics & mounting options for different applications



Standard Mount

IDEAL FOR

- Roadways
- Car Park
- Public Square
- Tennis Court
- Depot
- Industrial



MODEL	ETG-ACPL450	ETG-ACPL600-4K
Power (W)	450	600
Lumen Output (lm)	67,500	90,000
Net Weight (kg)	16.3 ± 0.3	17.8 ± 0.3
Dimensions (mm)	752 x 601 x 149	752 x 601 x 149
CCT (4K)	4000K (Optional 3000K/ 5000K)	
Beam Angle	T2 Short T3 Short T4 Short T5 Short NEMA 3x3 NEMA 6x6	

Luminous Efficacy (lm/W)	145	CRI	Ra70
Input Voltage	100-240 VAC / 100-277 V AC 50/60Hz	Driver	Inventronics
Input Surge Protection	6kV line-line, 10kV line-earth	Body	Aluminium alloy + PC Lens
Operating Temp	-30°C to +50°C	Finish	Powder Coated
PF	>0.90	Lifespan	>50,000 (Ta=30°C@L70)
Colour	Black	Optional Controls	DALI Control/ Photocell/ Timer Control
		Optional Accessories	Photocell Controller / 7 Pin NEMA Socket

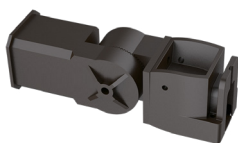
MOUNTING BRACKETS

DAYLIGHT SENSOR

OPTIONAL SMART CONTROL ENABLED



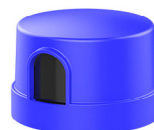
Straight Arm



Slip Fitter



U-Bracket



Nema Socket - 7pin

Note: Product code has been changed from ACP to ACPL